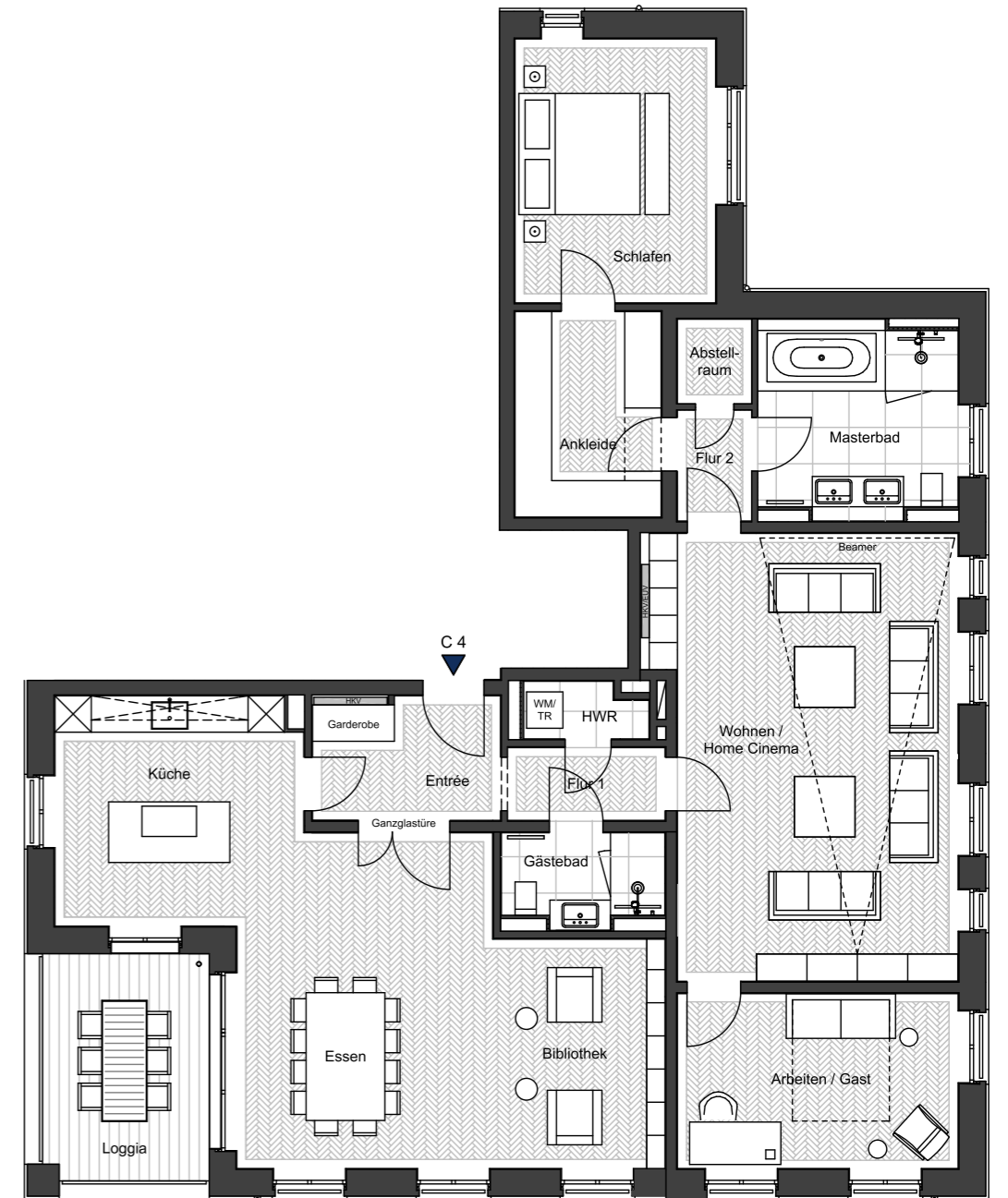


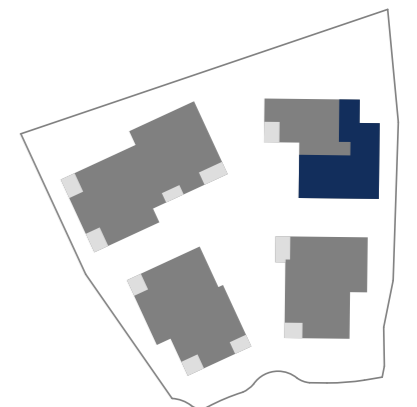
# Wohnung C 4, C 6

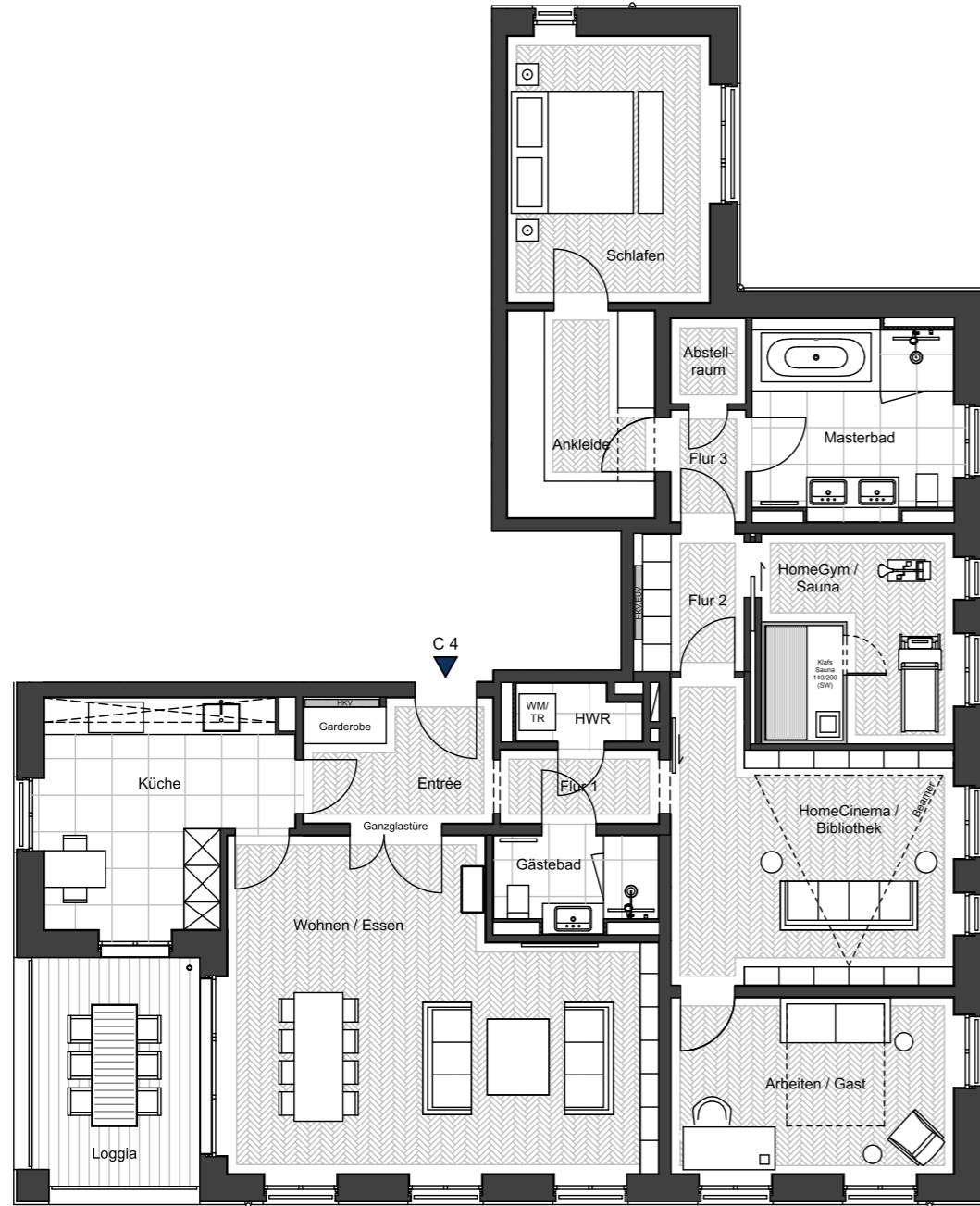


Wohnflächenberechnung	C4 Beletage	C6 Beletage
Entrée	6,17 m <sup>2</sup>	6,17 m <sup>2</sup>
Flur 1	3,12 m <sup>2</sup>	3,19 m <sup>2</sup>
HWR	1,78 m <sup>2</sup>	1,78 m <sup>2</sup>
Gästebad	3,86 m <sup>2</sup>	4,11 m <sup>2</sup>
Wohnen / Home Cinema	34,79 m <sup>2</sup>	34,82 m <sup>2</sup>
Masterbad	10,59 m <sup>2</sup>	10,59 m <sup>2</sup>
Flur 2	2,24 m <sup>2</sup>	2,24 m <sup>2</sup>
Abstellraum	1,71 m <sup>2</sup>	1,71 m <sup>2</sup>
Ankleide	8,17 m <sup>2</sup>	8,17 m <sup>2</sup>
Schlafen	14,79 m <sup>2</sup>	14,79 m <sup>2</sup>
Arbeiten / Gast	14,05 m <sup>2</sup>	14,33 m <sup>2</sup>
Küche / Essen / Bibliothek	49,33 m <sup>2</sup>	49,87 m <sup>2</sup>
Loggia (50%)	5,12 m <sup>2</sup>	5,12 m <sup>2</sup>
	155,72 m <sup>2</sup>	156,89 m <sup>2</sup>

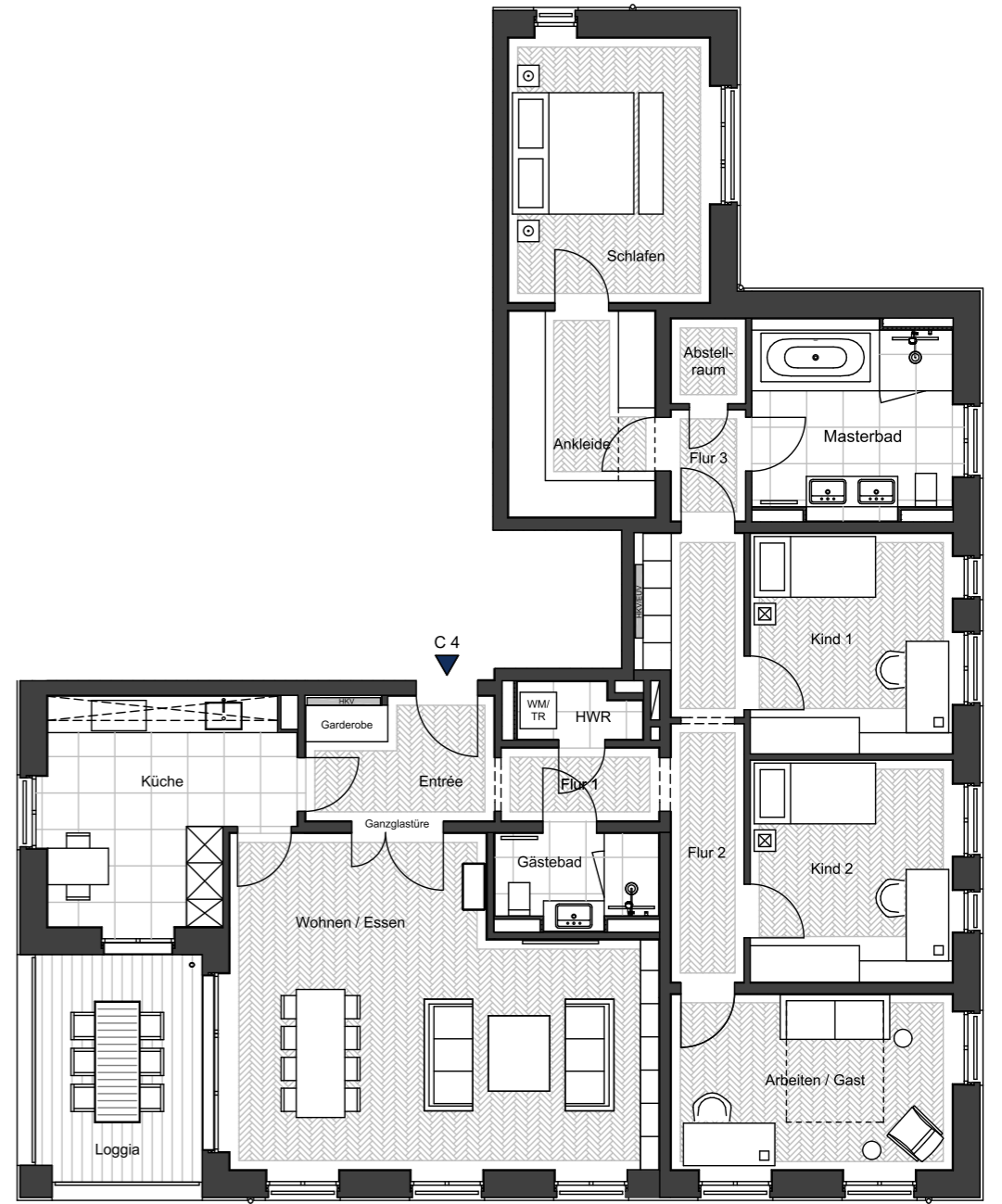


Grundrissvarianten s. Seite 2





Grundrissvariante 1 (SW)



Grundrissvariante 2 (SW)

